

kirloskar
Oil Engines

TO THOSE WHO
POWER LIFE, WE SAY

MAY THE

POWER

**ALWAYS BE
WITH YOU**



**CPCB IV+
COMPLIANT**

INDIA'S LARGEST
FLEET OF GENSETS

200-250 kVA

BETTER POWER FOR A *limitless* TOMORROW

200-250 kVA

Prime Rating at rated rpm (as per ISO8528)	kVA	200	250	
	kW	160	200	
Genset Model		KG4-200WS1	KG4-250WS1	
Frequency	Hz	50		
Power Factor	lagging	0.8		
Voltage	V	415 (3Ø)		
Governing class (As per ISO 8528 Part-V)		G3		
DG set Noise level at 1 meter	dB(A)	<75 (Genset with canopy)		
Fuel tank capacity (Standard DG set)	Ltrs	400	600	
Weight of genset with canopy (approx.) [^]	Dry	Kg	3080	3990
	Wet	Kg	3150	4100
Overall dimensions of genset [^]	Length	mm	4200	4750
	Width	mm	1450	1700
	Height	mm	1900	2005
Electrical Battery Starting Voltage	Volts-DC	12	24	
ENGINE				
Engine Model		6K1080ETA 4G2	6SL90ETA 4G2	
Rated output (Prime Continuous rating as per ISO 8528-1)	kW	183.8	228	
	HP	250	310	
No. of cylinder	Number	6	6	
Cubic capacity ²	Ltrs	6.48	8.86	
Bore x Stroke	mm	105 x 125	118 x 135	
Rated Speed	RPM	1500		
Aspiration	NA/TC/TA	TA		
Lube Oil change period	hrs.	500		
Lube oil Sump Capacity	Ltrs	25	27	
Coolant Capacity	Ltrs	28	36	
Adblue/ DEF capacity	Ltrs	45		
ALTERNATOR				
Insulation Class		H		
Alternator Efficiency (at 100% load) 0.8 pf ^{**}	%	94.2	94.3	
Max Voltage Dip at Full Load 0.8 pf lag		< 20 %		
Max Time to build up rated voltage at Rated RPM		< 2 sec, provided engine reach the rated speed		

[^] Tolerances Apply

[⊕] These Weight are for handling & transportation only

^{**} Efficiency of Alternator as per standards IEC60034-1

Notes

AdBlue used should follow ISO 22241.

Above specifications are subject to change without prior notice due to continuous technical development

For intermediate ratings, kindly contact nearest Kirloskar office

For Site Conditions other than standard operating conditions consult Kirloskar Oil Engines for available prime power.

7 Easy steps for a happy Genset Ownership

- Insist on a load-study
- Select the Genset rating as per the load-study and with sufficient margin for future load expansion
- Apply site-selection guidelines carefully
- Insist on installation in line with Kirloskar Green guidelines
- Ensure adequate size and proper connection of cables
- Understand the Genset operation & maintenance procedures during commissioning
- Follow routine maintenance protocols through authorized Kirloskar Green service dealers



Genset kVA 200 to 250 kVA Features



Prime rating and Stand-by rating

'Prime power' is designed for Unlimited hours, as compared to 'Emergency stand-by' designed for 200 hours in a year. Prime rated Gensets also permit 10% temporary overloading. Users need to carefully select the Genset rating to meet their requirement. Kirloskar offers Prime power as a standard offer. Contact Kirloskar for stand-by ratings.



No replacement to displacement

Engine capacity (cc) plays a vital role in Genset performance. Higher engine capacity leads to a robust and stable Genset performance.

Higher engine capacity also enables the Genset to respond quickly & positively to sudden load additions.



Beest-in-class Fluid Efficiency (Fuel & DEF)

Kirloskar Gensets offer a unique combination of CPCB norm compliance and enhanced fuel efficiency. Across the range, Kirloskar Gensets offer substantial savings in fuel cost.

O2E Series (Optimal Operating Efficiency):

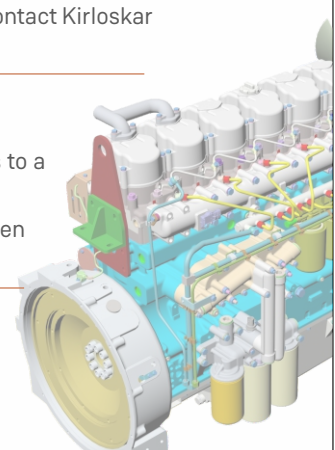
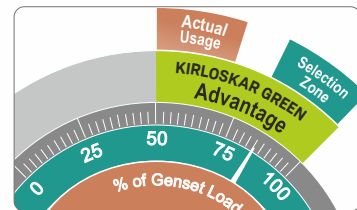
Genset ratings are selected based on the present load and future expansion. Fuel efficiency of most Gensets is optimized at the full rating of the Genset.

In practice, Gensets rarely get loaded to full capacity. Power demand variations across day & night, weekdays & weekends, summer & winter lead to an average 50-70% loading on Gensets.

Considering this practical situation, Kirloskar has extended fuel efficiency optimization from 100%, right up to 50% of rated load.

In line with fuel efficiency Kirloskar Genset ensures the better DEF efficiency and accordingly optimized the DEF tank size.

Combination of best-in-class fuel efficiency & O2E provides a double advantage.



Common Rail Direct Injection System (CRDi):

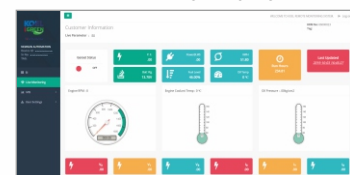
Common rail diesel injection technology, popularly known as CRDi, provides a significant upgrade over traditional mechanical fuel injection systems. CRDi provides precise fuel control, multiple injections, enhanced performance, lower noise and reduced emissions. High pressure common rail system employed on Kirloskar CPCB IV+ Gensets maximizes fuel atomization, delivering a smooth and smoke free performance. Diesel filters with 'A' class filtration are used for CRDi Engines which enhances the filtration efficiency. Common rail fuel injection system will provide a new level of performance, efficiency, and reliability.



Genset Monitoring at Your Finger Tips

Kirloskar gensets are enabled with Kirloskar remote monitoring system which shares Real Time Genset information and location Services. It can be accessed via mobile device or desktop. Kirloskar remote monitoring system also highlights any parameter which needs special attention. These critical indication alerts are sent to user mobile via text message. It also alerts nearest services dealer in case of any emergency break-down.

KRM Desktop Display



Ask your Dealer for KRM login details & password



On Board Diagnostics :

Superior uptime. Genset comes with advanced diagnostic capabilities, this coupled with Kirloskar remote monitoring system provides real time monitoring of performance, emission and service critical parameters this helps for early diagnosis to fix the issues before system breakdown



State of the art Genset Controller*

Kirloskar Genset put the command in your hands. Micro-processor based Genset controllers display a host of genset parameters and put all controls at your fingertips.

Monitoring Features:

- Phase Voltages & Currents, Frequency, Genset kVA, kW, kWh, kVAR, Power Factor, Canopy Temperature (optional)
- Lube oil Pressure, Engine Temperature, RPM, Run Hours, Number of starts, Fuel Level, Auto / Manual Stop, Battery charge condition, AMF feature

Diagnostic Features :

- Battery charging failure, Over/Under speed, Over Current, Over/Under Voltage, Over kW, Phase Seq., Phase missing, Mains Under voltage, Earth Fault trip, Low fuel level
- Low lube oil Pressure, High Engine Temperature, Low/High battery voltage, Low Fuel Level, Over Crank protection, Routine maintenance indicator, Genset Test Facility, Mains Frequency

Optional Features:

- Modbus Communication

* Controller KG640C is only for 6K Engine

KG745 Controller



Peace-of-mind Ownership

Kirloskar Gensets have always been preferred for their robust design and reliability over long usage life. Kirloskar range carries the confidence of well-established and proven engine platforms. For compliance to revised CPCB norms, Kirloskar has carefully selected those technologies which not only retain, but enhance Gensets durability and on-site serviceability.

Thus, Kirloskar Gensets offer you many years of trouble-free performance; backed by the assurance of prompt support. Peace-of-mind driven by product reliability and low cost of ownership.



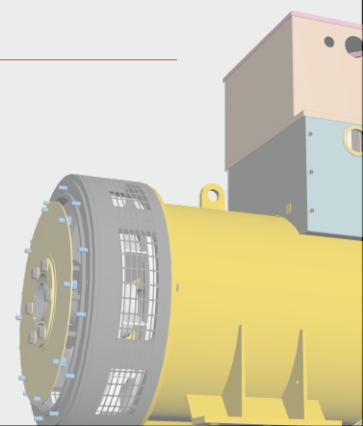
Alternator Features:

Kirloskar Alternator is compact in design & comes with AREP winding and Digital AVR. Auxillary Regulation Excitation Principle (AREP) winding improves the Non-linear load handling capability, Motor starting capacity. Advanced Digital AVR improves the Voltage regulation and Response time.

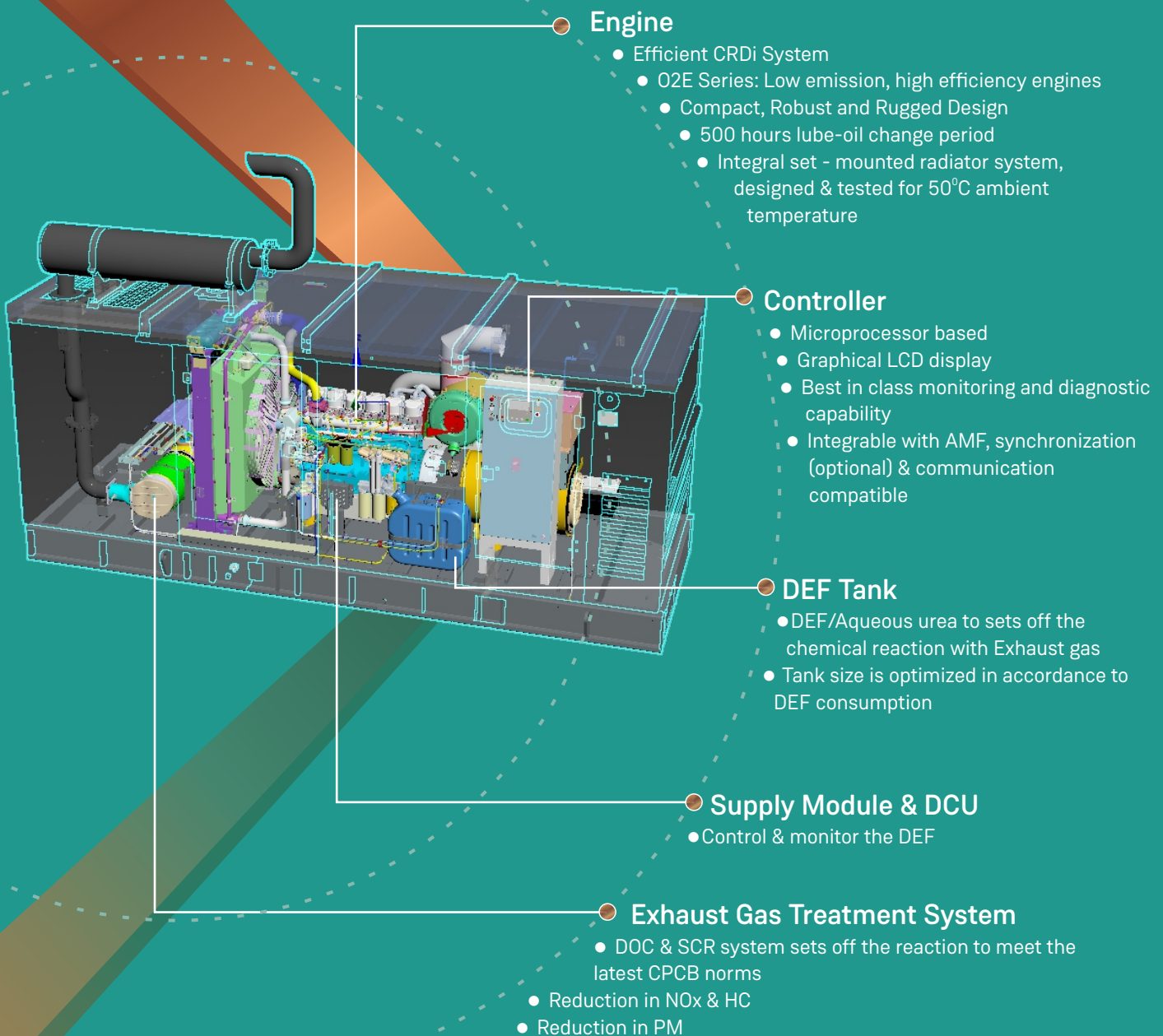


Compact footprint:

Kirloskar CPCB compliant Gensets are having compact footprint which results in space saving. CPCB compliant technology is upgraded by maintaining the compact footprint of Genset.



Glimpses CPCB IV+ Genset (200-250 kVA)



O2E - Optimal operating efficiency
DEF - Diesel exhaust fluid
DCU - Dosing control unit
DOC - Diesel oxidation catalyst
SCR - Selective catalytic reduction

EFFICIENCY. INTEGRATED

A KIRLOSKAR PROMISE

Efficient Products

- India's first IoT enabled digital genset
- Designed for convenient user experience
- Best-in-class fuel efficiency delivered
- Compact design & long life product
- Optimized consumption of lubricant oil
- Optimized total cost of ownership (TCO)
- All products tested before delivery



Efficient Solutions

- Load sizing for every single genset order
- One stop power back-up solutions
- Serves complete application gamut
- Highly trained & experienced team
- Non-conventional solutions (bio-diesel)
- Specific solution for harsh environments
- Exhaust mgmt., foundation, cabling etc.

Efficient Service

- India's widest service dealer network
- Kirloskar connect-self-service application
- eFSR-Electronic field service report
- Over 6000 trained service engineers
- Over 600,000 machines under care
- 98%+ parts available at each outlet
- Flexible & economical AMC-Bandhan



Efficient Network

- Consistent, reliable & long-established
- 250+ expert touch points across India
- 500+ solution oriented professionals
- Uniform customer experience across
- Central system for enquiry to PRF
- Fair trade practices & Price transparency

Efficient Deliveries

- Cost-effective deliveries guaranteed
- Assured 7-day delivery of gensets
- Supports project management system
- Reduced working capital for customer
- Award-winning replenishment model
- Assurance of FRESH products always



Efficient 24X7 Care

- 24 X 7 operational customer care centre
- Team of over 70 trained & focused exec.
- Tracking every service request till closure
- Centrally maintained CRM for all requests
- Satisfaction call after every SR closure
- Central sales lead tracking system
- Continuous NPS and CDI measurement

We offer products for every segment & take part in the India's growth story.



Infrastructure



Industry



IT/ITES



Hospitality



Health



Reality



Government



Logistics

kirloskar
Oil Engines



www.kirloskaroilengines.com

Kirloskar Oil Engines Limited

A Kirloskar Group Company

Laxmanrao Kirloskar Road, Khadki,
Pune 411 003 INDIA.



88 06 33 44 33

koel.helpdesk@kirloskar.com

Stamp of
Authorised
Representative